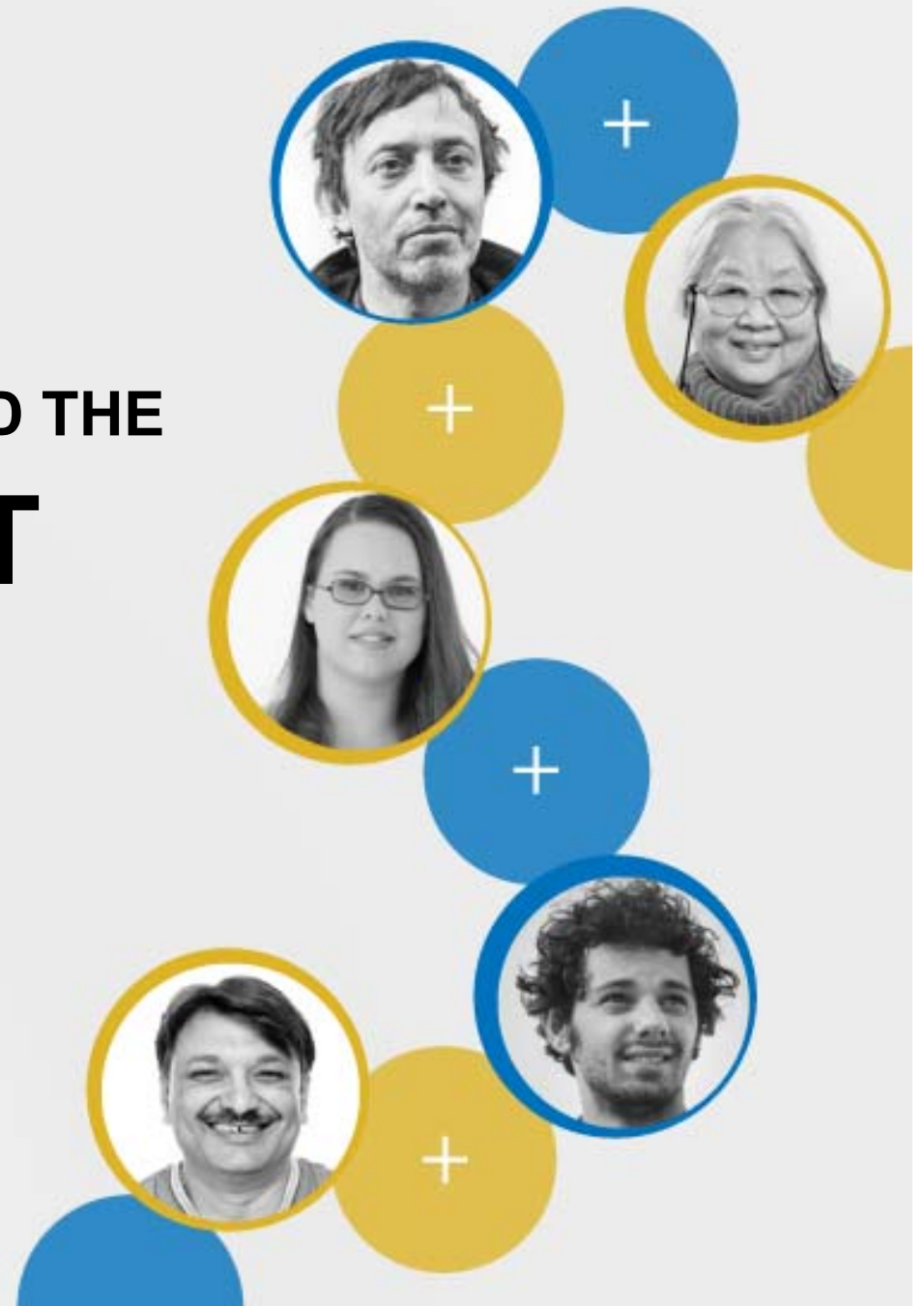




# RECOVERY AND THE EMPLOYMENT CONTINUUM

---

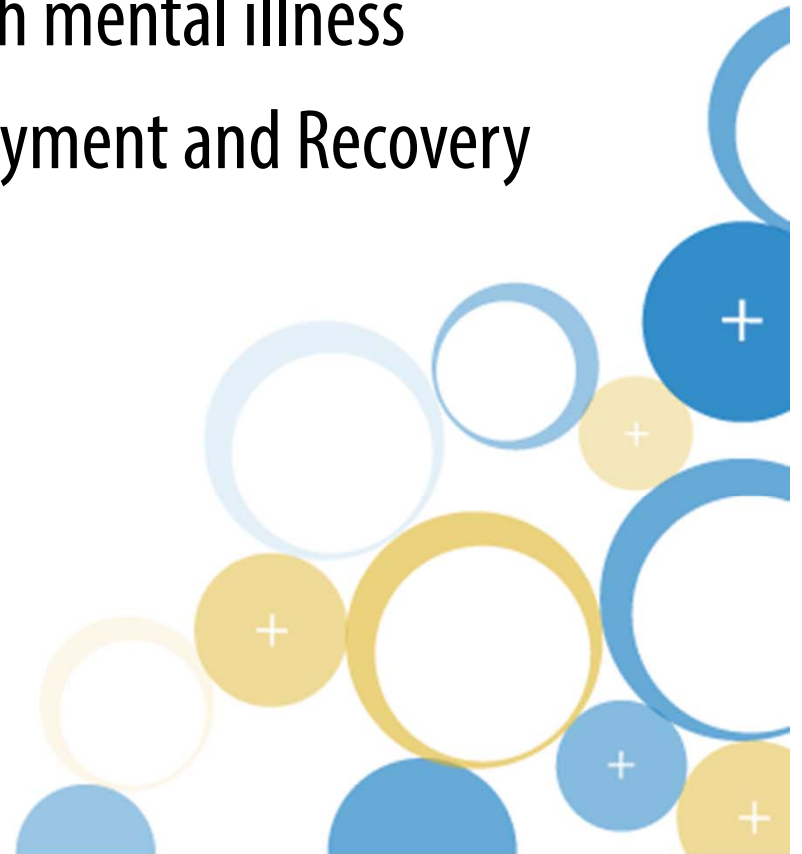
ERI's early experiences  
providing employment  
services through CCS





# OBJECTIVES

- Introduce the Employment Continuum
- Discuss ERI's services for persons with mental illness
- See the relationship between employment and Recovery
- Describe ERI's early CCS experiences



# ERI EMPLOYMENT CONTINUUM



# ERI COMMUNITY BENEFITS SPECIALIST PROGRAM (CBS)



Benefits

Stability





# COMPREHENSIVE COMMUNITY SERVICES

- Psychosocial rehabilitation services

- Screening and Assessment
- Service Planning
- Service Facilitation
- Diagnostic Evaluations
- Medication Management
- Physical Health
- Peer Support

- Individual Skill Development
- Employment Skill Training
- Psychoeducation
- Wellness
- Psychotherapy
- Substance Abuse



# CCS AND EMPLOYMENT

< 15%  
Employed

60-70%  
Desire  
Employment

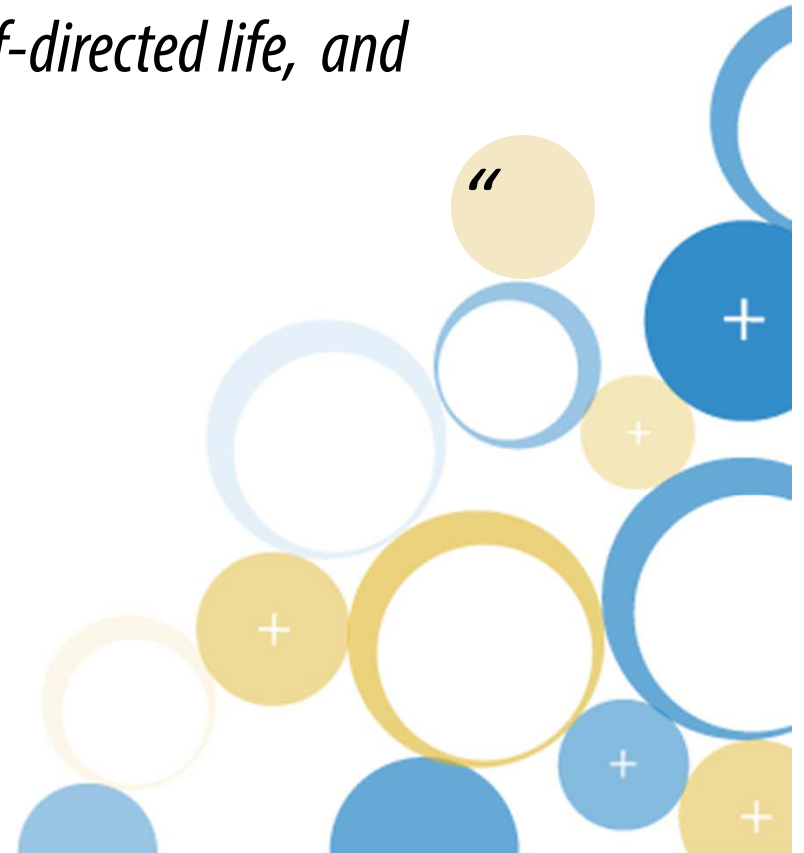
2%  
Receive  
Support





# RECOVERY

*“A process of change through which individuals improve their health and wellness, live a self-directed life, and strive to reach their full potential.”*





# SAMHSA'S FOUR DIMENSIONS THAT SUPPORT RECOVERY



Health



Home



Purpose



Community







# EMPLOYMENT AS ENGINE FOR RECOVERY



Work is treatment



Financial Independence



A Place to Go



Integration, Relationships





# EARLY EXPERIENCES



Connecting to DVR services



Work incentive benefits counseling



# EARLY EXPERIENCES



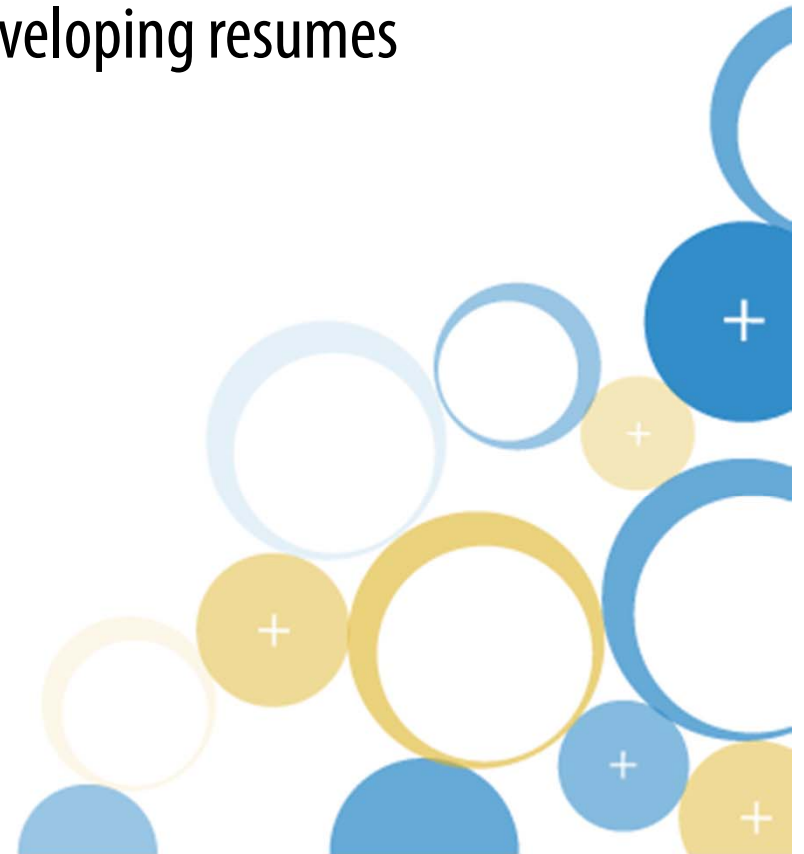
Filing out applications/ developing resumes



Structuring job search



Job Search Support group





# EARLY EXPERIENCES



Peer-supported employment services

Developing assertiveness skills

CCS Recovery team





# DREAM BIG



# Contact US

- Address
- Phone
- Website

